

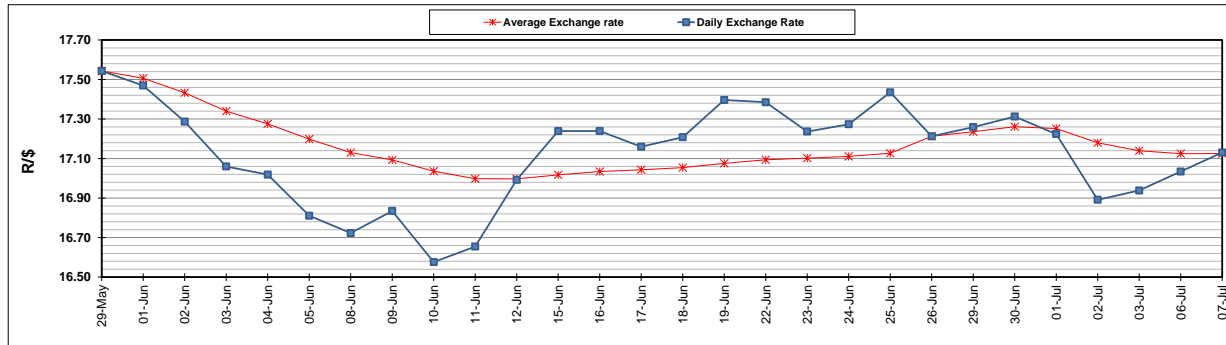
	PETROL 95 ULP	PETROL 93 ULP & LRP	DIESEL 0.05%	DIESEL 0.005%	ILL. PAR.
GAUTENG PUMP PRICE (SA c/l) AS FROM 01/07/2020	1,512.000	1,483.000	-	-	-
WHOLESALE PRICE (SA c/l) AS FROM 01/07/2020	-	-	1,303.560	1,307.960	703.828
SINGLE NATIONAL MAXIMUM RETAIL PRICE	-	-	-	-	882.000
BASIC FUEL PRICE - 07/07/2020 (SA c/l)	568.296	546.744	588.348	592.699	519.464
PRESS RELEASE CONTRIBUTION TO BFP 01/07/2020 - 07/07/2020 (SA c/l)	564.770	545.770	552.630	557.030	499.128
UNIT OVER/(UNDER) RECOVERY - 07/07/2020 (SA c/l)	(3.526)	(0.974)	(35.718)	(35.669)	(20.336)
AVERAGE BASIC FUEL PRICE 26/06/2020 - 07/07/2020	559.437	542.181	582.223	586.203	512.646
AVERAGE UNIT OVER/(UNDER) RECOVERY 26/06/2020 - 07/07/2020	(59.167)	(57.536)	(94.468)	(92.548)	(93.768)

### ANALYSIS MOVEMENT OF AVERAGE OVER/(UNDER) RECOVERY

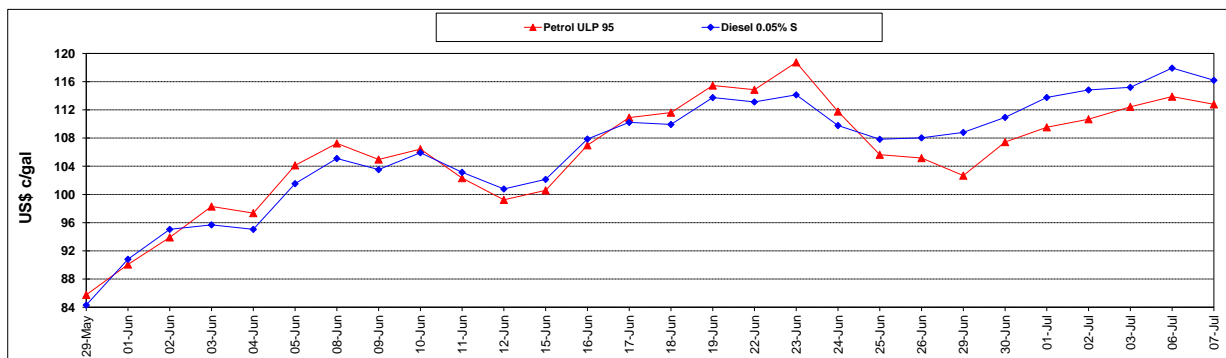
	PETROL 95	PETROL 93	DIESEL 0.05%	DIESEL 0.005%	ILL. PAR.
- MOVEMENT IN INTERNATIONAL PRODUCT PRICES	(59.226)	(57.593)	(94.529)	(92.610)	(93.822)
- MOVEMENT IN EXCHANGE RATE	0.059	0.057	0.061	0.062	0.054
AVERAGE UNIT OVER/(UNDER) RECOVERY 26/06/2020 - 07/07/2020	(59.167)	(57.536)	(94.468)	(92.548)	(93.768)

### R/\$ EXCHANGE RATE - (R/\$17.1305 - 07/07/2020)

#### EXCHANGE RATE USED IN BASIC FUEL PRICE



#### INTERNATIONAL PRODUCT PRICES OF BASKET USED IN BASIC FUEL PRICE



#### BASIC FUEL PRICE IN SA CENTS PER LITRE

